



Certificate of Analysis

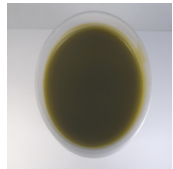
Sample: CE10625005-001
Harvest/Lot ID: 1452HG-062221
Metrc #: 1A4010500023795000000218
Batch Date: 06/22/21
Batch#: 1452HG-062221
Sample Size Received: 1 gram
Total Weight/Volume: 23716 gram gram
Retail Product Size: 98 gram
Ordered : 06/25/21
sampled : 06/25/21
Completed: 06/29/21 Expires: 06/29/22
Sampling Method: SOP-024

Jun 29, 2021 | Sun God Herbals

License # 330-1044756IHH
4894 Runway Dr. #104
Central Point, OR, 97502, US

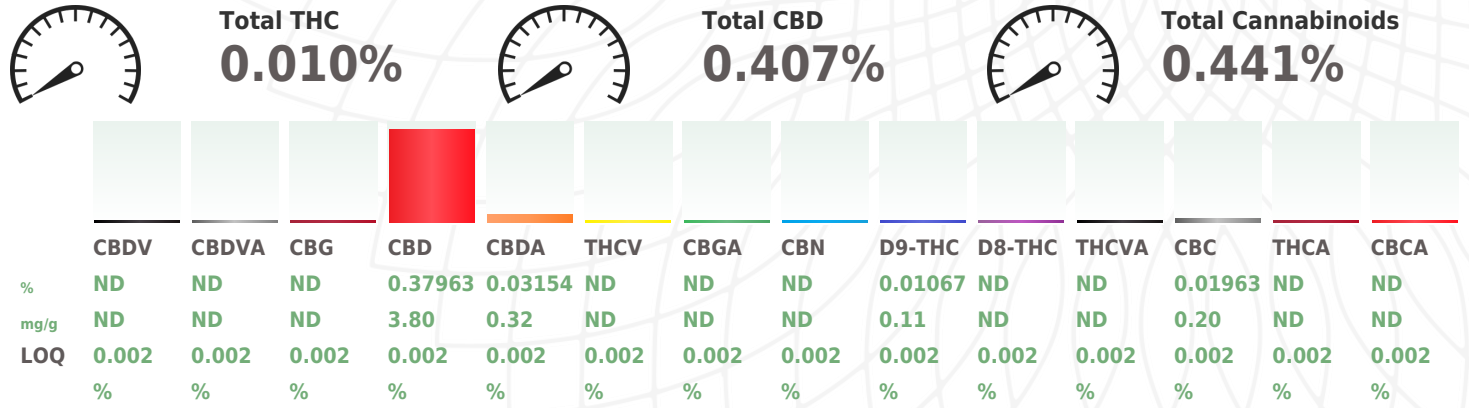
Page 1 of 2

PRODUCT IMAGE SAFETY RESULTS



									
Pesticides	Heavy Metals	Microbials	Mycotoxins	Residuals Solvents	Filtration	Water Activity	Moisture	Homogeneity	Terpenes
NOT TESTED	NOT TESTED	NOT TESTED	NOT TESTED	NOT TESTED	NOT TESTED	NOT TESTED	NOT TESTED	NOT TESTED	NOT TESTED

CANNABINOID RESULTS



Cannabinoid Profile Test

Analyzed by 11	Weight 1.019g	Extraction date : NA	Extracted By : NA
Analysis Method -SOP.T.40.020, SOP.T.30.050	Reviewed On - 06/29/21 15:13:13	Batch Date : 06/28/21 15:30:00	
Analytical Batch -CE000098POT	Instrument Used : HPLC 2030 EID 005 - Low Concentration	Running On :	

Reagent	Consums. ID
020521.06	D01493069
020521.08	32009E-1232
	436020160AS3 436020338AS2 436021005AS3
	C0000642
	042C4-042AL
	F148560

"Total THC" and "Total CBD" are calculated values and are an Oregon reporting requirement (OAR 333-064-0100). For Cannabinoid analysis, only delta 9-THC, THCA, CBD, CBDA are ORELAP accredited analytes. Cannabinoid values reported for plant matter are dry weight corrected; Instrument LOQ for all cannabinoids is 0.5 mg/mL, LOQ 'in matrix' is dependent on extraction parameters. FD = Field Duplicate; LOQ = Limit of Quantitation.

This report shall not be reproduced, unless in its entirety, without written approval from Kaycha Labs. This report is an Kaycha Labs certification. The results relate only to the material or product analyzed. Test results are confidential unless explicitly waived otherwise. Void after 1 year from test end date. Cannabinoid content of batch material may vary depending on sampling error. IC=In-control QC parameter, NC=Non-controlled QC parameter, ND=Not Detected, NA=Not Analyzed, ppm=Parts Per Million, ppb=Parts Per Billion. Limit of Detection (LoD) and Limit of Quantitation (LoQ) are terms used to describe the smallest concentration that can be reliably measured by an analytical procedure. RPD=Reproducibility of two measurements. Action Levels are State determined thresholds for human safety for consumption and/or inhalation. The result >99% are variable based on uncertainty of measurement (UM) for the analyte. The UM error is available from the lab upon request. The "Decision Rule" for the pass/fail does not include the UM. The limits are based on F.S. Rule 64-4.310.

Anthony Smith
Lab Director
State License #
010-10166277B9D
ISO Accreditation # 99861



06/29/21
Signed On



POTENCY BATCH QC REPORT



METHOD BLANK

Cannabinoid

Cannabinoid	LOQ	Result	Units
CBDV_WET	0.002	ND	%
CBDVA_WET	0.002	ND	%
THCV_WET	0.002	ND	%
CBD_WET	0.002	ND	%
CBG_WET	0.002	ND	%
CBDA_WET	0.002	ND	%
CBN_WET	0.002	ND	%
CBGA_WET	0.002	ND	%
THCVA_WET	0.002	ND	%
D9-THC_WET	0.002	ND	%
D8-THC_WET	0.002	ND	%
CBC_WET	0.002	ND	%
THCA_WET	0.002	ND	%
CBC-A_WET	0.002	ND	%

Analytical Batch - CE000098POT

Instrument Used : HPLC 2030 EID 005 - Low Concentration



LCS

Cannabinoid

Cannabinoid	LOQ	Recovery	Units	Recovery Limits
CBG_WET	0.002	95.2	%	70-130
CBD_WET	0.002	96.1	%	70-130
CBDA_WET	0.002	94.4	%	70-130
THCV_WET	0.002	86.9	%	70-130
CBGA_WET	0.002	91.3	%	70-130
CBN_WET	0.002	97.2	%	70-130
D9-THC_WET	0.002	95.7	%	70-130
CBC_WET	0.002	97.9	%	70-130
THCA_WET	0.002	96.6	%	70-130
CBC-A_WET	0.002	94.7	%	70-130

Analytical Batch - CE000098POT

Instrument Used : HPLC 2030 EID 005 - Low Concentration



**Cannabis Product
Batch Quality Report**

Sun God Herbals

KR Order: CE10625005

541-423-8080

METRC Batch ID: 1A4010500023795000000218

Lic. # AG-R1044756IHH

Batch#: 1452HG-062221; Batch Size: 23716g

Ordered: 6/25/2021; Sampled: 6/25/2021; Completed: 6/29/2021

Sample collection: OAR 333-064-100

Batch samples: Cannabinoid Potency Analysis

ODA CS: H202

OAR 333-007-0430 Potency

Sample	Lab ID	Total THC (mg/g)	Total CBD (mg/g)	THCA (mg/g)	Δ9 THC (mg/g)	CBD-A (mg/g)	CBD (mg/g)
Organic Hercules Muscle Ease 3.5oz Salve	CE10625005-001	0.10	4.07	<LOQ	0.11	0.32	3.80
Organic Hercules Muscle Ease 3.5oz Salve FD	CE10625005-002	0.10	4.02	<LOQ	0.11	0.31	3.75
Average		0.10	4.05	<LOQ	0.1	0.3	3.8
RPD		0.00%	1.24%				
RPD Status:		PASS					
Target THC		<60	mg/g				
THC Limit		<60	mg/g				
Largest increment:		0.10	mg/g				
Average THC:		0.10	mg/g				
Total THC per unit status:		PASS					
THC per unit of sale:		9.8	mg/98g unit				

Potency Analytical Batch ID: 098POT

Notes: Total THC = THCa x 0.877 + D9-THC; Total CBD = CBDa x 0.877 + CBD. Cannabinoid method: HPLC-UV, SOP.T.40.020; LCS recoveries for all analytes 70 – 130%; Replicate recoveries <20% RSD; Sample and solvent blanks <LOQ (or ND); LOQ = Limit of Quantitation; NA = Not Applicable.

References: KGO lab reports



540 E. Vilas Rd., Suite F
Central Point, OR 97502
www.kaychalabs.com
541.668.7444

Anthony Smith
Anthony Smith, Ph.D

This report shall not be reproduced, unless in its entirety, without written approval from Kaycha Labs and KGO, LLC. This report is a Kaycha Labs certification. The results relate only to the material or product analyzed. Test results are confidential unless explicitly waived otherwise. Void after 1 year from test end date. Cannabinoid content of batch material may vary depending on sampling error. Sampling method: KR-SOP-018; ORELAP-SOP-002.