



Certificate of Analysis

Sample: CE10708003-005

Harvest/Lot ID: 5008-070221

Metric #: 1A4010300004FB2000023661

Metric Source Package #: 1A4010300004FB2000023536

Batch Date: 07/02/21

Batch#: 5008-070221

Sample Size Received: 35.68 gram

Total Weight/Volume: 28000 gram gram

Retail Product Size: 28 gram

Ordered: 07/08/21

sampled: 07/08/21

Completed: 07/09/21 Expires: 07/09/22

Sampling Method: SOP-024

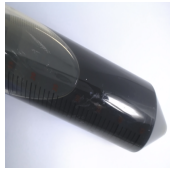
Jul 09, 2021 | Sun God Medicinals





Page 1 of 2

License # 030-10037523839

540 East Vilas Rd Ste C
Central Point, OR, 97502, US

PRODUCT IMAGE SAFETY RESULTS



									
Pesticides	Heavy Metals	Microbials	Mycotoxins	Residuals Solvents	Filtration	Water Activity	Moisture	Homogeneity	Terpenes
NOT TESTED	NOT TESTED	NOT TESTED	NOT TESTED	NOT TESTED	NOT TESTED	NOT TESTED	NOT TESTED	NOT TESTED	NOT TESTED

CANNABINOID RESULTS



Total THC
1.603%



Total CBD
0.000%



Total Cannabinoids
1.657%

	CBDV	CBDVA	CBG	CBD	CBDA	THCV	CBGA	CBN	D9-THC	D8-THC	THCVA	CBC	THCA	CBCA
%	<LOQ	<LOQ	0.0227	<LOQ	<LOQ	<LOQ	<LOQ	<LOQ	1.5394	<LOQ	<LOQ	0.0223	0.0730	<LOQ
mg/g	<LOQ	<LOQ	0.23	<LOQ	<LOQ	<LOQ	<LOQ	<LOQ	15.39	<LOQ	<LOQ	0.22	0.73	<LOQ
LOQ	0.002	0.002	0.002	0.002	0.002	0.002	0.002	0.002	0.002	0.002	0.002	0.002	0.002	0.002
%	%	%	%	%	%	%	%	%	%	%	%	%	%	%

Cannabinoid Profile Test

Analyzed by 11	Weight 0.956g	Extraction date : 07/08/21 02:07:08	Extracted By : 13
Analysis Method -SOP.T.40.020, SOP.T.30.050	Reviewed On - 07/09/21 13:46:14	Batch Date : 07/08/21 14:06:59	
Analytical Batch -CE000143POT	Instrument Used : HPLC 2030 EID 005 - Low Concentration	Running On :	

Reagent	Dilution	Consums. ID	Consums. ID
062821.R09	41	D01493069	945C6-945H
062221.01		32009E-1232	F148560
		436020160AS3 436020338AS2 436021005AS3	0325891
		C0000642	
		041CD-041C	
		042C4-042AL	

"Total THC" and "Total CBD" are calculated values and are an Oregon reporting requirement (OAR 333-064-0100). For Cannabinoid analysis, only delta 9-THC, THCA, CBD, CBDA are ORELAP accredited analytes. Cannabinoid values reported for plant matter are dry weight corrected; Instrument LOQ for all cannabinoids is 0.5 mg/mL, LOQ 'in matrix' is dependent on extraction parameters. FD = Field Duplicate; LOQ = Limit of Quantitation.

This report shall not be reproduced, unless in its entirety, without written approval from Kaycha Labs. This report is an Kaycha Labs certification. The results relate only to the material or product analyzed. Test results are confidential unless explicitly waived otherwise. Void after 1 year from test end date. Cannabinoid content of batch material may vary depending on sampling error. IC=In-control QC parameter, NC=Non-controlled QC parameter, ND=Not Detected, NA=Not Analyzed, ppm=Parts Per Million, ppb=Parts Per Billion. Limit of Detection (LoD) and Limit of Quantitation (LoQ) are terms used to describe the smallest concentration that can be reliably measured by an analytical procedure. RPD=Reproducibility of two measurements. Action Levels are State determined thresholds for human safety for consumption and/or inhalation. The result >99% are variable based on uncertainty of measurement (UM) for the analyte. The UM error is available from the lab upon request. The "Decision Rule" for the pass/fail does not include the UM. The limits are based on F.S. Rule 64-4.310.

Anthony Smith
Lab Director
State License #
010-10166277B9D
ISO Accreditation # 99861



Signature

07/09/21
Signed On



POTENCY BATCH QC REPORT

 **METHOD BLANK**

Cannabinoid	LOQ	Result	Units
CBDV_WET	0.002	<LOQ	%
CBDVA_WET	0.002	<LOQ	%
THCV_WET	0.002	<LOQ	%
CBD_WET	0.002	<LOQ	%
CBG_WET	0.002	<LOQ	%
CBDA_WET	0.002	<LOQ	%
CBN_WET	0.002	<LOQ	%
CBGA_WET	0.002	<LOQ	%
THCVA_WET	0.002	<LOQ	%
D9-THC_WET	0.002	<LOQ	%
D8-THC_WET	0.002	<LOQ	%
CBC_WET	0.002	<LOQ	%
THCA_WET	0.002	<LOQ	%
CBC-A_WET	0.002	<LOQ	%
TOTAL CANNABINOIDS	0.002	<LOQ	%
TOTAL CBD	0.002	<LOQ	%
TOTAL THC	0.002	<LOQ	%
CBDV	0.002	<LOQ	%
CBDVA	0.002	<LOQ	%
CBG	0.002	<LOQ	%
CBD	0.002	<LOQ	%
CBDA	0.002	<LOQ	%
THCV	0.002	<LOQ	%
CBGA	0.002	<LOQ	%
CBN	0.002	<LOQ	%
D9-THC	0.002	<LOQ	%
D8-THC	0.002	<LOQ	%
THCVA	0.002	<LOQ	%
CBC	0.002	<LOQ	%
THCA	0.002	<LOQ	%
CBCA	0.002	<LOQ	%

Analytical Batch - CE000143POT
Instrument Used : HPLC 2030 EID 005 - Low Concentration

 **LCS**

Cannabinoid	LOQ	Recovery	Units	Recovery Limits
CBG_WET	0.002	89.2	%	70-130
CBD_WET	0.002	89.5	%	70-130
CBDA_WET	0.002	90.0	%	70-130
THCV_WET	0.002	89.7	%	70-130
CBGA_WET	0.002	86.1	%	70-130
CBN_WET	0.002	92.1	%	70-130
D9-THC_WET	0.002	90.6	%	70-130
CBC_WET	0.002	88.9	%	70-130
THCA_WET	0.002	85.9	%	70-130
CBC-A_WET	0.002	83.3	%	70-130

Analytical Batch - CE000143POT
Instrument Used : HPLC 2030 EID 005 - Low Concentration

This report shall not be reproduced, unless in its entirety, without written approval from Kaycha Labs. This report is an Kaycha Labs certification. The results relate only to the material or product analyzed. Test results are confidential unless explicitly waived otherwise. Void after 1 year from test end date. Cannabinoid content of batch material may vary depending on sampling error. IC=In-control QC parameter, NC=Non-controlled QC parameter, ND=Not Detected, NA=Not Analyzed, ppm=Parts Per Million, ppb=Parts Per Billion. Limit of Detection (LoD) and Limit Of Quantitation (LoQ) are terms used to describe the smallest concentration that can be reliably measured by an analytical procedure. RPD=Reproducibility of two measurements. Action Levels are State determined thresholds for human safety for consumption and/or inhalation. The result >99% are variable based on uncertainty of measurement (UM) for the analyte. The UM error is available from the lab upon request. The "Decision Rule" for the pass/fail does not include the UM. The limits are based on F.S. Rule 64-4.310.

Anthony Smith
Lab Director
State License #
010-10166277B9D
ISO Accreditation # 99861



Signature

07/09/21

Signed On



540 E Vilas Rd Suite F
Central Point, OR, 97502, US

Kaycha Labs

Ra Cannabis Sativa Tincture

N/A

Sample Type: Tincture



Certificate of Analysis

Sample: CE10708003-005
Harvest/Lot ID: 5008-070221
Metric #: 1A4010300004FB2000023661
Metric Source Package #: 1A4010300004FB2000023536
Batch Date: 07/02/21
Batch#: 5008-070221
Sample Size Received: 35.68 gram
Total Weight/Volume: 28000 gram gram
Retail Product Size: 28 gram
Ordered : 07/08/21
sampled : 07/08/21
Completed: 07/09/21 Expires: 07/09/22
Sampling Method: SOP-024

Jul 09, 2021 | Sun God Medicinals

License # 030-10037523839
540 East Vilas Rd Ste C
Central Point, OR, 97502, US

Cannabinoid Potency Batch Quality Report:

OLCC/ODA Control Study ID: MJ2426

Sample	Lab ID	Total THC (mg/g)	Total CBD (mg/g)	THCA (mg/g)	Δ^9 THC (mg/g)	CBD-A (mg/g)	CBD (mg/g)
Ra Cannabis Sativa Tincture	CE10708003-005	16.03	0.00	0.73	15.39	0.00	0.00
Ra Cannabis Sativa Tincture FD	CE10708003-006	15.90	0.00	0.71	15.28	0.00	0.00
Average		15.97	0.00	0.72	15.3	0.0	0.0
RPD		0.81%	#DIV/0!				
RPD Status:		PASS					
Target THC		35.71	mg/g	<1000 mg/28g unit			
THC Limit		39.29	mg/g	<1100 mg/28g unit			
Largest THC increment:		16.03	mg/g				
Average THC:		15.97	mg/g				
Total THC per unit status:		PASS					
Average THC per unit of sale:		447.0	mg/ unit				



540 E. Vilas Rd., Suite F
Central Point, OR 97502
www.kaychalabs.com
541.668.7444

Anthony Smith, Ph.D

This report shall not be reproduced, unless in its entirety, without written approval from Kaycha Labs and KGO, LLC. This report is a Kaycha Labs certification. The results relate only to the material or product analyzed. Test results are confidential unless explicitly waived otherwise. Void after 1 year from test end date. Cannabinoid content of batch material may vary depending on sampling error. Sampling method: KR-SOP-018; ORELAP-SOP-002.

