



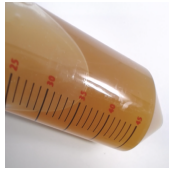
# Certificate of Analysis

Sample: CE10709005-001  
Harvest/Lot ID: 6015-070821  
Metrc #: 1A4010300004FB2000023666  
Metrc Source Package #: 1A4010300004FB2000023666  
Batch Date: 07/08/21  
Batch#: 6015-070821  
Sample Size Received: 35.46 gram  
Total Weight/Volume: 32500 gram gram  
Retail Product Size: 32.5 gram  
Ordered : 07/09/21  
sampled : 07/09/21  
Completed: 07/13/21 Expires: 07/13/22  
Sampling Method: SOP-024

Jul 13, 2021 | Sun God Medicinals

License # 030-10037523839  
540 East Vilas Rd Ste C  
Central Point, OR, 97502, US

PRODUCT IMAGE SAFETY RESULTS



									
Pesticides	Heavy Metals	Microbials	Mycotoxins	Residuals Solvents	Filtth	Water Activity	Moisture	Homogeneity	Terpenes
NOT TESTED	NOT TESTED	NOT TESTED	NOT TESTED	NOT TESTED	NOT TESTED	NOT TESTED	NOT TESTED	NOT TESTED	NOT TESTED

CANNABINOID RESULTS



Total THC  
**0.731%**



Total CBD  
**0.000%**



Total Cannabinoids  
**0.731%**

	CBDV	CBDVA	CBG	CBD	CBDA	THCV	CBGA	CBN	D9-THC	D8-THC	THCVA	CBC	THCA	CBCA
%	<LOQ	<LOQ	<LOQ	<LOQ	<LOQ	<LOQ	<LOQ	<LOQ	0.731	<LOQ	<LOQ	<LOQ	<LOQ	<LOQ
mg/g	<LOQ	<LOQ	<LOQ	<LOQ	<LOQ	<LOQ	<LOQ	<LOQ	7.32	<LOQ	<LOQ	<LOQ	<LOQ	<LOQ
LOQ	0.050	0.050	0.050	0.050	0.050	0.050	0.050	0.050	0.050	0.050	0.050	0.050	0.050	0.050
%	%	%	%	%	%	%	%	%	%	%	%	%	%	%

Cannabinoid Profile Test

Analyzed by 11	Weight 1.228g	Extraction date : 07/12/21 03:07:56	Extracted By : 14
Analysis Method -SOP.T.40.020, SOP.T.30.050		Reviewed On - 07/13/21 15:17:50	Batch Date : 07/12/21 15:37:28
Analytical Batch -CE000148POT		Instrument Used : HPLC 2030 EID 0055 Running On :	

Reagent	Dilution	Consums. ID	Consums. ID
062821.R09	41	D01493069	F148560
062221.01		32009E-1232	0325891
020521.08		436020160AS3 436020338AS2 436021005AS3	
		041CD-041C	
		042C4-042AL	
		945C6-945H	

"Total THC" and "Total CBD" are calculated values and are an Oregon reporting requirement (OAR 333-064-0100). For Cannabinoid analysis, only delta 9-THC, THCA, CBD, CBDA are ORELAP accredited analytes. Cannabinoid values reported for plant matter are dry weight corrected; Instrument LOQ for all cannabinoids is 0.5 mg/mL, LOQ 'in matrix' is dependent on extraction parameters. FD = Field Duplicate; LOQ = Limit of Quantitation.

This report shall not be reproduced, unless in its entirety, without written approval from Kaycha Labs. This report is an Kaycha Labs certification. The results relate only to the material or product analyzed. Test results are confidential unless explicitly waived otherwise. Void after 1 year from test end date. Cannabinoid content of batch material may vary depending on sampling error. IC=In-control QC parameter, NC=Non-controlled QC parameter, ND=Not Detected, NA=Not Analyzed, ppm=Parts Per Million, ppb=Parts Per Billion. Limit of Detection (LoD) and Limit of Quantitation (LoQ) are terms used to describe the smallest concentration that can be reliably measured by an analytical procedure. RPD=Reproducibility of two measurements. Action Levels are State determined thresholds for human safety for consumption and/or inhalation. The result >99% are variable based on uncertainty of measurement (UM) for the analyte. The UM error is available from the lab upon request. The "Decision Rule" for the pass/fail does not include the UM. The limits are based on F.S. Rule 64-4.310.

Anthony Smith  
Lab Director  
State License #  
010-10166277B9D  
ISO Accreditation # 99861



07/13/21  
Signed On



# POTENCY BATCH QC REPORT

 **METHOD BLANK**

Cannabinoid	LOQ	Result	Units
CBDV_WET	0.05	<LOQ	%
CBDVA_WET	0.05	<LOQ	%
THCV_WET	0.05	<LOQ	%
CBD_WET	0.05	<LOQ	%
CBG_WET	0.05	<LOQ	%
CBDA_WET	0.05	<LOQ	%
CBN_WET	0.05	<LOQ	%
CBGA_WET	0.05	<LOQ	%
THCVA_WET	0.05	<LOQ	%
D9-THC_WET	0.05	<LOQ	%
D8-THC_WET	0.05	<LOQ	%
CBC_WET	0.05	<LOQ	%
THCA_WET	0.05	<LOQ	%
CBC-A_WET	0.05	<LOQ	%
TOTAL CANNABINOIDS	0.05	<LOQ	%
TOTAL CBD	0.05	<LOQ	%
TOTAL THC	0.05	<LOQ	%
CBDV	0.05	<LOQ	%
CBDVA	0.05	<LOQ	%
CBG	0.05	<LOQ	%
CBDA	0.05	<LOQ	%
THCV	0.05	<LOQ	%
CBGA	0.05	<LOQ	%
CBN	0.05	<LOQ	%
D9-THC	0.05	<LOQ	%
D8-THC	0.05	<LOQ	%
THCVA	0.05	<LOQ	%
CBC	0.05	<LOQ	%
THCA	0.05	<LOQ	%
CBCA	0.05	<LOQ	%

**Analytical Batch - CE000148POT**  
**Instrument Used : HPLC 2030 EID 0055**

 **LCS**

Cannabinoid	LOQ	Recovery	Units	Recovery Limits
CBG_WET	0.05	91.6	%	70-130
CBD_WET	0.05	91.2	%	70-130
CBDA_WET	0.05	90.1	%	70-130
THCV_WET	0.05	90.7	%	70-130
CBGA_WET	0.05	88.7	%	70-130
CBN_WET	0.05	95.2	%	70-130
D9-THC_WET	0.05	93.3	%	70-130
CBC_WET	0.05	93.4	%	70-130
THCA_WET	0.05	90.2	%	70-130
CBC-A_WET	0.05	89.6	%	70-130

**Analytical Batch - CE000148POT**  
**Instrument Used : HPLC 2030 EID 0055**

This report shall not be reproduced, unless in its entirety, without written approval from Kaycha Labs. This report is an Kaycha Labs certification. The results relate only to the material or product analyzed. Test results are confidential unless explicitly waived otherwise. Void after 1 year from test end date. Cannabinoid content of batch material may vary depending on sampling error. IC=In-control QC parameter, NC=Non-controlled QC parameter, ND=Not Detected, NA=Not Analyzed, ppm=Parts Per Million, ppb=Parts Per Billion. Limit of Detection (LoD) and Limit Of Quantitation (LoQ) are terms used to describe the smallest concentration that can be reliably measured by an analytical procedure. RPD=Reproducibility of two measurements. Action Levels are State determined thresholds for human safety for consumption and/or inhalation. The result >99% are variable based on uncertainty of measurement (UM) for the analyte. The UM error is available from the lab upon request. The "Decision Rule" for the pass/fail does not include the UM. The limits are based on F.S. Rule 64-4.310.

**Anthony Smith**  
Lab Director  
State License #  
010-10166277B9D  
ISO Accreditation # 99861



Signature

07/13/21

Signed On



540 E Vilas Rd Suite F  
Central Point, OR, 97502, US

Kaycha Labs

Ra Cannabis Dark Peppermint Pattie Syrup  
N/A

Sample Type: Syrup/Honey



# Certificate of Analysis

Sample: CE10709005-001  
Harvest/Lot ID: 6015-070821  
Metrac #: 1A4010300004FB2000023666  
Metrac Source Package #: 1A4010300004FB2000023664  
Batch Date: 07/08/21  
Batch#: 6015-070821  
Sample Size Received: 35.46 gram  
Total Weight/Volume: 32500 gram gram  
Retail Product Size: 32.5 gram  
Ordered : 07/09/21  
sampled : 07/09/21  
Completed: 07/13/21 Expires: 07/13/22  
Sampling Method: SOP-024

Jul 13, 2021 | Sun God Medicinals

License # 030-10037523839  
540 East Vilas Rd Ste C  
Central Point, OR, 97502, US

## Cannabinoid Potency Batch Quality Report:

OLCC/ODA Control Study ID: MJ2042

Sample	Lab ID	Total THC (mg/g)	Total CBD (mg/g)	THCA (mg/g)	Δ9-THC (mg/g)	CBD-A (mg/g)	CBD (mg/g)
Ra Cannabis Dark Peppermint Pattie Syrup	CE10709005-001	7.31	<LOQ	<LOQ	<b>7.32</b>	<LOQ	<LOQ
Ra Cannabis Dark Peppermint Pattie Syrup FD	CE10709005-002	<b>7.93</b>	<LOQ	<LOQ	<b>7.94</b>	<LOQ	<LOQ
Average		7.62			7.63		
RPD		8.14%					
RPD Status:		<b>PASS</b>					
Target THC		30.8	mg/g	<1000 mg/32.5g unit			
THC Limit		33.8	mg/g	<1100 mg/32.5g unit			
Largest THC increment:		7.93	mg/g				
Average THC:		7.62	mg/g				
Total THC per unit status:		<b>PASS</b>					
Average THC per unit of sale:		247.7	mg/ unit				



540 E. Vilas Rd., Suite F  
Central Point, OR 97502  
www.kaychalabs.com  
541.668.7444

Anthony Smith, Ph.D

This report shall not be reproduced, unless in its entirety, without written approval from Kaycha Labs and KGO, LLC. This report is a Kaycha Labs certification. The results relate only to the material or product analyzed. Test results are confidential unless explicitly waived otherwise. Void after 1 year from test end date. Cannabinoid content of batch material may vary depending on sampling error. Sampling method: KR-SOP-018; ORELAP-SOP-002.