



Sun God | Infused Preroll | Allies | Fruit Explosion | Blood Orange

Sample ID: G4B0311-03 Matrix: Finished Inhalable Cannabinoid Product

Test ID: 1A40103000359D1000008973

Source ID: 1A40103000359D1000008926

Date Sampled: 02/21/24 Date Accepted: 02/21/24

Harvest/Prod. Date: 02.21.2024

Cascade Valley Cannabis
cascadevalleycannabis@gmail.com

Primary and Duplicate Results at a Glance

	Averaged	Primary	Duplicate	%RPD (10% Action Level)
Total THC:	10.51 %	10.65 %	10.36 %	2.76 % PASS
Total CBD:	<LOQ(0.0107%) %	< LOQ %	< LOQ %	0 % PASS
Pesticides:	PASS	PASS	PASS	
Microbials:	PASS	PASS	PASS	
Metals:	PASS	PASS	PASS	
Mycotoxins:	PASS	PASS	PASS	



Nolan Mundie
Lab Director - 2/29/2024

These results relate only to the sample included on this report. The report may not be reproduced except in full, without the written permission of Green Leaf Lab.



Sun God | Infused Preroll | Allies | Fruit Explosion | Blood Orange

Sample ID: G4B0311-03 Matrix: Finished Inhalable Cannabinoid Product

Test ID: 1A40103000359D1000008973

Source ID: 1A40103000359D1000008926

Date Sampled: 02/21/24 Date Accepted: 02/21/24

Harvest/Prod. Date: 02.21.2024

Cascade Valley Cannabis
cascadevalleycannabis@gmail.com

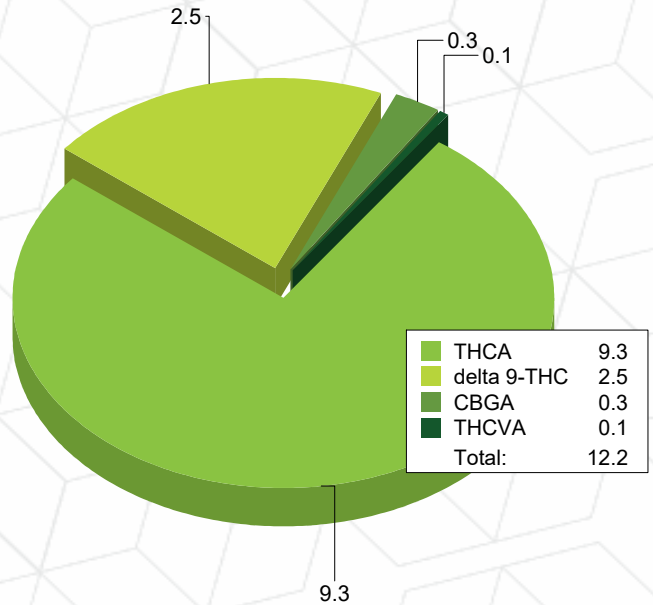
Potency Analysis

Date/Time Extracted: 02/22/24 09:47

Analysis Method/SOP: 215

Batch Identification: 2408053

Cannabinoids	LOQ (%)	% by Wt.	mg/g	Cannabinoids Profile	
Total THC	0.04732	10.65	106.5		
Total CBD	0.01066	< LOQ	< LOQ		
THCA	4.992E-4	9.283	92.83		
delta 9-THC	4.992E-4	2.508	25.08		
delta 8-THC	0.02340	< LOQ	< LOQ		
THCV	0.02626	< LOQ	< LOQ		
THCVA	0.009880	0.06829	0.6829		
CBD	4.992E-4	< LOQ	< LOQ		
CBDA	4.992E-4	< LOQ	< LOQ		
CBDV	0.02600	< LOQ	< LOQ		
CBDVA	0.008580	< LOQ	< LOQ		
CBN	0.01560	< LOQ	< LOQ		
CBG	0.004160	< LOQ	< LOQ		
CBGA	0.004160	0.3405	3.405		
CBC	0.04654	< LOQ	< LOQ		
Total Cannabinoids		12.20	122		



Total THC = delta 9-THC + (THCA * 0.877)

Total CBD = CBD + (CBDA * 0.877)

Total CBG = CBG + (CBGA * 0.878)

LOQ=Limit of Quantification, the lowest measurable concentration of an analyte.

THCA, delta 9-THC, delta 8-THC, CBDA and CBD are accredited by TNI 2016 and ISO 17025



ISO 17025
ACCREDITED
LABORATORY

Nolan Mundie
Lab Director - 2/29/2024

These results relate only to the sample included on this report. The report may not be reproduced except in full, without the written permission of Green Leaf Lab.



Sun God | Infused Preroll | Allies | Fruit Explosion | Blood Or

Sample ID: G4B0311-03 Matrix: Finished Inhalable Cannabinoid Product

Test ID: 1A40103000359D1000008973

Source ID: 1A40103000359D1000008926

Date Sampled: 02/21/24 Date Accepted: 02/21/24

Harvest/Prod. Date: 02.21.2024

Cascade Valley Cannabis
cascadevalleycannabis@gmail.com

Pesticide Analysis in ppm

Date/Time Extracted: 02/22/24 11:36

Analysis Method/SOP: 203

Analyte	Result	Action Level	LOD	LOQ	Units	Notes	Analyte	Result	Action Level	LOD	LOQ	Units	Notes
Abamectin	< LOQ	0.5		0.04	ppm		Acephate	< LOQ	0.4		0.04	ppm	
Acequinocyl	< LOQ	2		0.04	ppm		Acetamidrid	< LOQ	0.2		0.04	ppm	
Aldicarb	< LOQ	0.4		0.04	ppm		Azoxystrobin	< LOQ	0.2		0.04	ppm	
Bifenazate	< LOQ	0.2		0.04	ppm		Bifenthrin	< LOQ	0.2		0.04	ppm	
Boscalid	< LOQ	0.4		0.04	ppm		Carbaryl	< LOQ	0.2		0.04	ppm	
Carbofuran	< LOQ	0.2		0.04	ppm		Chlorantraniliprole	< LOQ	0.2		0.04	ppm	
Chlorfenapyr	< LOQ	1		0.1	ppm		Chlorpyrifos	< LOQ	0.2		0.04	ppm	
Clofentezine	< LOQ	0.2		0.04	ppm		Cyfluthrin	< LOQ	1		0.1	ppm	
Cypermethrin	< LOQ	1		0.1	ppm		Daminozide	< LOQ	1		0.04	ppm	
DDVP (Dichlorvos)	< LOQ	1		0.04	ppm		Diazinon	< LOQ	0.2		0.04	ppm	
Dimethoate	< LOQ	0.2		0.04	ppm		Ethoprophos	< LOQ	0.2		0.04	ppm	
Etofenprox	< LOQ	0.4		0.04	ppm		Etoxazole	< LOQ	0.2		0.04	ppm	
Fenoxycarb	< LOQ	0.2		0.04	ppm		Fenproximate	< LOQ	0.4		0.04	ppm	
Fipronil	< LOQ	0.4		0.04	ppm		Fonicamid	< LOQ	1		0.04	ppm	
Fludioxonil	< LOQ	0.4		0.04	ppm		Hexythiazox	< LOQ	1		0.04	ppm	
Imazalil	< LOQ	0.2		0.04	ppm		Imidacloprid	< LOQ	0.4		0.04	ppm	
Kresoxim-methyl	< LOQ	0.4		0.04	ppm		Malathion	< LOQ	0.2		0.04	ppm	
Metalaxyl	< LOQ	0.2		0.04	ppm		Methiocarb	< LOQ	0.2		0.04	ppm	
Methomyl	< LOQ	0.4		0.04	ppm		Methyl parathion	< LOQ	0.2		0.04	ppm	
MGK-264	< LOQ	0.2		0.04	ppm		Myclobutanil	< LOQ	0.2		0.04	ppm	
Naled	< LOQ	0.5		0.04	ppm		Oxamyl	< LOQ	1		0.04	ppm	
Paclobutrazol	< LOQ	0.4		0.04	ppm		Permethrins	< LOQ	0.2		0.04	ppm	
Phosmet	< LOQ	0.2		0.04	ppm		Piperonyl butoxide	< LOQ	2		1.0	ppm	
Prallethrin	< LOQ	0.2		0.04	ppm		Propiconazole	< LOQ	0.4		0.04	ppm	
Propoxur	< LOQ	0.2		0.04	ppm		Pyrethrins	< LOQ	1		0.5	ppm	
Pyridaben	< LOQ	0.2		0.04	ppm		Spinosad	< LOQ	0.2		0.04	ppm	
Spiromesifen	0.05	0.2		0.04	ppm		Spirotetramat	< LOQ	0.2		0.04	ppm	
Spiroxamine	< LOQ	0.4		0.04	ppm		Tebuconazole	< LOQ	0.4		0.04	ppm	
Thiacloprid	< LOQ	0.2		0.04	ppm		Thiamethoxam	< LOQ	0.2		0.04	ppm	
Trifloxystrobin	< LOQ	0.2		0.04	ppm								

ND - Compound not detected

Results above the Action Level fail state testing requirements and will be highlighted **Red**.



ISO 17025
ACCREDITED
LABORATORY

Nolan Mundie
Lab Director - 2/29/2024

These results relate only to the sample included on this report. The report may not be reproduced except in full, without the written permission of Green Leaf Lab.



Sun God | Infused Preroll | Allies | Fruit Explosion | Blood Or

Sample ID: G4B0311-03 Matrix: Finished Inhalable Cannabinoid Product

Test ID: 1A40103000359D1000008973

Source ID: 1A40103000359D1000008926

Date Sampled: 02/21/24 Date Accepted: 02/21/24

Harvest/Prod. Date: 02.21.2024

Cascade Valley Cannabis
cascadevalleycannabis@gmail.com

Mycotoxins by LCMSMS

Date/Time Extracted: 02/22/24 11:36

Analysis Method/SOP: Mycotoxins

Analyte	Result	Action Level	LOD	LOQ	Units
aflatoxin B1	< LOQ	20	10.0	10.0	ug/kg
aflatoxin B2	< LOQ	20	10.0	10.0	ug/kg
aflatoxin G1	< LOQ	20	10.0	10.0	ug/kg
aflatoxin G2	< LOQ	20	10.0	10.0	ug/kg
ochratoxin A	< LOQ	20	10.0	10.0	ug/kg
Total Aflatoxins	< LOQ	20	10.0	10.0	ug/kg

<LOQ - Results below the Limit of Quantitation

Results above the Action Level fail state testing requirements and will be highlighted Red.

Microbials by PCR

Date/Time Extracted: 02/22/24 09:00

Analysis Method/SOP: Microbials

Analyte	Result	Action Level	LOD	LOQ	Units	
Escherichia Coli	ND	1	0.00	0.00	cfu/g	No detection in 1 gram
Salmonella	ND	1	0.00	0.00	cfu/g	No detection in 1 gram

Metals by ICPMS

Date/Time Extracted: 02/22/24 09:38

Analysis Method/SOP: Metals

Analyte	Result	Action Level	LOD	LOQ	Units
Arsenic	< LOQ	0.2	0.03	0.08	ug/g
Cadmium	< LOQ	0.2	0.02	0.08	ug/g
Lead	0.08	0.5	0.01	0.08	ug/g
Mercury	< LOQ	0.1	0.01	0.04	ug/g

<LOQ - Results below the Limit of Quantitation

Results above the Action Level fail state testing requirements and will be highlighted Red.



ISO 17025
ACCREDITED
LABORATORY

Nolan Mundie
Lab Director - 2/29/2024

These results relate only to the sample included on this report. The report may not be reproduced except in full, without the written permission of Green Leaf Lab.



Quality Control Potency

Batch: 2408053 - 215-Useable

Blank(2408053-BLK1)							
Analyte	Result	LOQ	Units	%Recovery Limits	Extracted	Analyzed	Notes
THCA	< LOQ	4.992E-4	%		02/22/24 09:47	02/22/24 16:59	
delta 9-THC	< LOQ	4.992E-4	%		02/22/24 09:47	02/22/24 16:59	
delta 8-THC	< LOQ	0.02340	%		02/22/24 09:47	02/22/24 16:59	
THCV	< LOQ	0.02626	%		02/22/24 09:47	02/22/24 16:59	
THCVA	< LOQ	0.009880	%		02/22/24 09:47	02/22/24 16:59	
CBD	< LOQ	4.992E-4	%		02/22/24 09:47	02/22/24 16:59	
CBDA	< LOQ	4.992E-4	%		02/22/24 09:47	02/22/24 16:59	
CBDV	< LOQ	0.02600	%		02/22/24 09:47	02/22/24 16:59	
CBDVA	< LOQ	0.008580	%		02/22/24 09:47	02/22/24 16:59	
CBN	< LOQ	0.01560	%		02/22/24 09:47	02/22/24 16:59	
CBG	< LOQ	0.004160	%		02/22/24 09:47	02/22/24 16:59	
CBGA	< LOQ	0.004160	%		02/22/24 09:47	02/22/24 16:59	
CBC	< LOQ	0.04654	%		02/22/24 09:47	02/22/24 16:59	

Reference(2408053-SRM1)							
Analyte	% Recovery	LOQ	Units	%Recovery Limits	Extracted	Analyzed	Notes
THCA	92.4	4.992E-4	%	90-110	02/22/24 09:47	02/22/24 17:34	
delta 9-THC	99.8	4.992E-4	%	90-110	02/22/24 09:47	02/22/24 17:34	
delta 8-THC	98.9	0.02340	%	90-110	02/22/24 09:47	02/22/24 17:34	
CBD	107	4.992E-4	%	90-110	02/22/24 09:47	02/22/24 17:34	
CBDA	94.6	4.992E-4	%	90-110	02/22/24 09:47	02/22/24 17:34	

Pesticide Analysis

Batch: 2408065 - 203

Blank(2408065-BLK1)							
Analyte	Result	LOQ	Units	%Recovery Limits	Extracted	Analyzed	Notes
Abamectin	< LOQ	0.04	ppm		02/22/24 11:36	02/22/24 18:12	
DDVP (Dichlorvos)	< LOQ	0.04	ppm		02/22/24 11:36	02/22/24 18:12	
Acephate	< LOQ	0.04	ppm		02/22/24 11:36	02/22/24 18:12	
Acequinocyl	< LOQ	0.04	ppm		02/22/24 11:36	02/22/24 18:12	
Acetamiprid	< LOQ	0.04	ppm		02/22/24 11:36	02/22/24 18:12	
Aldicarb	< LOQ	0.04	ppm		02/22/24 11:36	02/22/24 18:12	
Azoxystrobin	< LOQ	0.04	ppm		02/22/24 11:36	02/22/24 18:12	
Bifenazate	< LOQ	0.04	ppm		02/22/24 11:36	02/22/24 18:12	
Bifenthrin	< LOQ	0.04	ppm		02/22/24 11:36	02/22/24 18:12	
Boscalid	< LOQ	0.04	ppm		02/22/24 11:36	02/23/24 07:14	
Carbaryl	< LOQ	0.04	ppm		02/22/24 11:36	02/22/24 18:12	
Carbofuran	< LOQ	0.04	ppm		02/22/24 11:36	02/22/24 18:12	
Chlorantraniliprole	< LOQ	0.04	ppm		02/22/24 11:36	02/22/24 18:12	



Nolan Mundie
Lab Director - 2/29/2024

These results relate only to the sample included on this report. The report may not be reproduced except in full, without the written permission of Green Leaf Lab.



Quality Control Pesticide Analysis (Continued)

Batch: 2408065 - 203 (Continued)

Blank(2408065-BLK1)							
Analyte	Result	LOQ	Units	%Recovery Limits	Extracted	Analyzed	Notes
Chlorfenapyr	< LOQ	0.1	ppm		02/22/24 11:36	02/23/24 07:14	
Chlorpyrifos	< LOQ	0.04	ppm		02/22/24 11:36	02/22/24 18:12	
Clofentezine	< LOQ	0.04	ppm		02/22/24 11:36	02/22/24 18:12	
Cyfluthrin	< LOQ	0.1	ppm		02/22/24 11:36	02/23/24 07:14	
Cypermethrin	< LOQ	0.1	ppm		02/22/24 11:36	02/23/24 07:14	
Daminozide	< LOQ	0.04	ppm		02/22/24 11:36	02/22/24 18:12	
Diazinon	< LOQ	0.04	ppm		02/22/24 11:36	02/22/24 18:12	
Dimethoate	< LOQ	0.04	ppm		02/22/24 11:36	02/22/24 18:12	
Ethoprophos	< LOQ	0.04	ppm		02/22/24 11:36	02/22/24 18:12	
Etofenprox	< LOQ	0.04	ppm		02/22/24 11:36	02/22/24 18:12	
Etoxazole	< LOQ	0.04	ppm		02/22/24 11:36	02/22/24 18:12	
Fenoxycarb	< LOQ	0.04	ppm		02/22/24 11:36	02/22/24 18:12	
Fenpyroximate	< LOQ	0.04	ppm		02/22/24 11:36	02/22/24 18:12	
Fipronil	< LOQ	0.04	ppm		02/22/24 11:36	02/23/24 07:14	
Flonicamid	< LOQ	0.04	ppm		02/22/24 11:36	02/22/24 18:12	
Fludioxonil	< LOQ	0.04	ppm		02/22/24 11:36	02/23/24 07:14	
Hexythiazox	< LOQ	0.04	ppm		02/22/24 11:36	02/22/24 18:12	
Imazalil	< LOQ	0.04	ppm		02/22/24 11:36	02/22/24 18:12	
Imidacloprid	< LOQ	0.04	ppm		02/22/24 11:36	02/22/24 18:12	
Kresoxim-methyl	< LOQ	0.04	ppm		02/22/24 11:36	02/23/24 07:14	
Metalaxyl	< LOQ	0.04	ppm		02/22/24 11:36	02/22/24 18:12	
Malathion	< LOQ	0.04	ppm		02/22/24 11:36	02/23/24 07:14	
Methiocarb	< LOQ	0.04	ppm		02/22/24 11:36	02/22/24 18:12	
Methomyl	< LOQ	0.04	ppm		02/22/24 11:36	02/22/24 18:12	
Myclobutanil	< LOQ	0.04	ppm		02/22/24 11:36	02/22/24 18:12	
Methyl parathion	< LOQ	0.04	ppm		02/22/24 11:36	02/23/24 07:14	
Naled	< LOQ	0.04	ppm		02/22/24 11:36	02/22/24 18:12	
MGK-264	< LOQ	0.04	ppm		02/22/24 11:36	02/23/24 07:14	
Oxamyl	< LOQ	0.04	ppm		02/22/24 11:36	02/22/24 18:12	
Paclobutrazol	< LOQ	0.04	ppm		02/22/24 11:36	02/22/24 18:12	
Phosmet	< LOQ	0.04	ppm		02/22/24 11:36	02/22/24 18:12	
Permethrins	< LOQ	0.04	ppm		02/22/24 11:36	02/23/24 07:14	
Piperonyl butoxide	< LOQ	1.0	ppm		02/22/24 11:36	02/22/24 18:12	
Prallethrin	< LOQ	0.04	ppm		02/22/24 11:36	02/22/24 18:12	
Propiconazole	< LOQ	0.04	ppm		02/22/24 11:36	02/23/24 07:14	
Propoxur	< LOQ	0.04	ppm		02/22/24 11:36	02/22/24 18:12	
Pyrethrins	< LOQ	0.5	ppm		02/22/24 11:36	02/22/24 18:12	
Pyridaben	< LOQ	0.04	ppm		02/22/24 11:36	02/22/24 18:12	



Nolan Mundie
Lab Director - 2/29/2024



Quality Control Pesticide Analysis (Continued)

Batch: 2408065 - 203 (Continued)

Blank(2408065-BLK1)							
Analyte	Result	LOQ	Units	%Recovery Limits	Extracted	Analyzed	Notes
Spinosad	< LOQ	0.04	ppm		02/22/24 11:36	02/22/24 18:12	
Spiromesifen	< LOQ	0.04	ppm		02/22/24 11:36	02/22/24 18:12	
Spirotetramat	< LOQ	0.04	ppm		02/22/24 11:36	02/22/24 18:12	
Spiroxamine	< LOQ	0.04	ppm		02/22/24 11:36	02/22/24 18:12	
Tebuconazole	< LOQ	0.04	ppm		02/22/24 11:36	02/22/24 18:12	
Thiacloprid	< LOQ	0.04	ppm		02/22/24 11:36	02/22/24 18:12	
Thiamethoxam	< LOQ	0.04	ppm		02/22/24 11:36	02/22/24 18:12	
Trifloxystrobin	< LOQ	0.04	ppm		02/22/24 11:36	02/22/24 18:12	

LCS(2408065-BS1)							
Analyte	% Recovery	LOQ	Units	%Recovery Limits	Extracted	Analyzed	Notes
Abamectin	63.4	0.04	ppm	50-150	02/22/24 11:36	02/22/24 18:35	
DDVP (Dichlorvos)	88.3	0.04	ppm	60-120	02/22/24 11:36	02/22/24 18:35	
Acephate	83.2	0.04	ppm	60-120	02/22/24 11:36	02/22/24 18:35	
Acequinocyl	75.1	0.04	ppm	40-160	02/22/24 11:36	02/22/24 18:35	
Acetamiprid	109	0.04	ppm	60-120	02/22/24 11:36	02/22/24 18:35	
Aldicarb	109	0.04	ppm	60-120	02/22/24 11:36	02/22/24 18:35	
Azoxystrobin	108	0.04	ppm	60-120	02/22/24 11:36	02/22/24 18:35	
Bifenazate	80.9	0.04	ppm	60-120	02/22/24 11:36	02/22/24 18:35	
Bifenthrin	104	0.04	ppm	50-150	02/22/24 11:36	02/22/24 18:35	
Boscalid	94.8	0.04	ppm	60-120	02/22/24 11:36	02/23/24 07:39	
Carbaryl	100	0.04	ppm	60-120	02/22/24 11:36	02/22/24 18:35	
Carbofuran	108	0.04	ppm	60-120	02/22/24 11:36	02/22/24 18:35	
Chlorantraniliprole	42.7	0.04	ppm	60-120	02/22/24 11:36	02/22/24 18:35	BSL
Chlorfenapyr	104	0.1	ppm	60-120	02/22/24 11:36	02/23/24 07:39	
Chlorpyrifos	89.4	0.04	ppm	60-120	02/22/24 11:36	02/22/24 18:35	
Clofentezine	85.9	0.04	ppm	60-120	02/22/24 11:36	02/22/24 18:35	
Cyfluthrin	98.1	0.1	ppm	50-150	02/22/24 11:36	02/23/24 07:39	
Cypermethrin	98.1	0.1	ppm	50-150	02/22/24 11:36	02/23/24 07:39	
Daminozide	243	0.04	ppm	60-120	02/22/24 11:36	02/22/24 18:35	BSH
Diazinon	89.2	0.04	ppm	60-120	02/22/24 11:36	02/22/24 18:35	
Dimethoate	90.9	0.04	ppm	60-120	02/22/24 11:36	02/22/24 18:35	
Ethoprophos	84.1	0.04	ppm	60-120	02/22/24 11:36	02/22/24 18:35	
Etofenprox	110	0.04	ppm	50-150	02/22/24 11:36	02/22/24 18:35	
Etoxazole	108	0.04	ppm	60-120	02/22/24 11:36	02/22/24 18:35	
Fenoxycarb	105	0.04	ppm	60-120	02/22/24 11:36	02/22/24 18:35	
Fenpyroximate	83.1	0.04	ppm	60-120	02/22/24 11:36	02/22/24 18:35	
Fipronil	97.6	0.04	ppm	60-120	02/22/24 11:36	02/23/24 07:39	
Fonicamid	86.2	0.04	ppm	60-120	02/22/24 11:36	02/22/24 18:35	



Nolan Mundie
Lab Director - 2/29/2024

These results relate only to the sample included on this report. The report may not be reproduced except in full, without the written permission of Green Leaf Lab.



Quality Control Pesticide Analysis (Continued)

Batch: 2408065 - 203 (Continued)

LCS(2408065-BS1)							
Analyte	% Recovery	LOQ	Units	%Recovery Limits	Extracted	Analyzed	Notes
Fludioxonil	103	0.04	ppm	50-150	02/22/24 11:36	02/23/24 07:39	
Hexythiazox	79.3	0.04	ppm	60-120	02/22/24 11:36	02/22/24 18:35	
Imazalil	104	0.04	ppm	60-120	02/22/24 11:36	02/22/24 18:35	
Imidacloprid	93.2	0.04	ppm	60-120	02/22/24 11:36	02/22/24 18:35	
Kresoxim-methyl	102	0.04	ppm	60-120	02/22/24 11:36	02/23/24 07:39	
Metalaxyl	94.7	0.04	ppm	60-120	02/22/24 11:36	02/22/24 18:35	
Malathion	90.2	0.04	ppm	60-120	02/22/24 11:36	02/23/24 07:39	
Methiocarb	94.5	0.04	ppm	60-120	02/22/24 11:36	02/22/24 18:35	
Methomyl	104	0.04	ppm	60-120	02/22/24 11:36	02/22/24 18:35	
Myclobutanil	96.3	0.04	ppm	60-120	02/22/24 11:36	02/22/24 18:35	
Methyl parathion	73.9	0.04	ppm	50-150	02/22/24 11:36	02/23/24 07:39	
Naled	89.6	0.04	ppm	50-150	02/22/24 11:36	02/22/24 18:35	
MGK-264	98.3	0.04	ppm	50-150	02/22/24 11:36	02/23/24 07:39	
Oxamyl	86.2	0.04	ppm	60-120	02/22/24 11:36	02/22/24 18:35	
Paclobutrazol	90.3	0.04	ppm	60-120	02/22/24 11:36	02/22/24 18:35	
Phosmet	101	0.04	ppm	50-150	02/22/24 11:36	02/22/24 18:35	
Permethrins	98.7	0.04	ppm	50-150	02/22/24 11:36	02/23/24 07:39	
Piperonyl butoxide	159	1.0	ppm	60-120	02/22/24 11:36	02/22/24 18:35	BSH
Prallethrin	103	0.04	ppm	60-120	02/22/24 11:36	02/22/24 18:35	
Propiconazole	101	0.04	ppm	60-120	02/22/24 11:36	02/23/24 07:39	
Propoxur	101	0.04	ppm	60-120	02/22/24 11:36	02/22/24 18:35	
Pyrethrins	78.0	0.5	ppm	60-120	02/22/24 11:36	02/22/24 18:35	
Pyridaben	96.4	0.04	ppm	50-150	02/22/24 11:36	02/22/24 18:35	
Spinosad	97.4	0.04	ppm	50-150	02/22/24 11:36	02/22/24 18:35	
Spiromesifen	93.4	0.04	ppm	60-120	02/22/24 11:36	02/22/24 18:35	MSH
Spirotetramat	115	0.04	ppm	60-120	02/22/24 11:36	02/22/24 18:35	
Spiroxamine	92.0	0.04	ppm	60-120	02/22/24 11:36	02/22/24 18:35	
Tebuconazole	86.1	0.04	ppm	60-120	02/22/24 11:36	02/22/24 18:35	
Thiacloprid	100	0.04	ppm	60-120	02/22/24 11:36	02/22/24 18:35	
Thiamethoxam	96.2	0.04	ppm	60-120	02/22/24 11:36	02/22/24 18:35	
Trifloxystrobin	105	0.04	ppm	60-120	02/22/24 11:36	02/22/24 18:35	

Microbials

Batch: 2408049 - Microbials

Blank(2408049-BLK1)							
Analyte	Result	LOQ	Units	%Recovery Limits	Extracted	Analyzed	Notes
Salmonella	ND	0.00	cfu/g		02/22/24 09:00	02/23/24 15:28	
Escherichia Coli	ND	0.00	cfu/g		02/22/24 09:00	02/23/24 15:28	



Nolan Mundie
Lab Director - 2/29/2024



Quality Control Microbials (Continued)

Batch: 2408049 - Microbials (Continued)

LCS(2408049-BS1)							
Analyte	% Recovery	LOQ	Units	%Recovery Limits	Extracted	Analyzed	Notes
Salmonella	100		cfu/g	99-101	02/22/24 09:00	02/23/24 15:28	
Escherichia Coli	100		cfu/g	99-101	02/22/24 09:00	02/23/24 15:28	

Batch: 2408052 - 217

Blank(2408052-BLK1)							
Analyte	Result	LOQ	Units	%Recovery Limits	Extracted	Analyzed	Notes
Cadmium	< LOQ	0.08	ug/g		02/22/24 09:38	02/22/24 17:25	
Lead	< LOQ	0.08	ug/g		02/22/24 09:38	02/22/24 17:25	
Arsenic	< LOQ	0.08	ug/g		02/22/24 09:38	02/22/24 17:25	
Mercury	< LOQ	0.04	ug/g		02/22/24 09:38	02/22/24 17:25	

LCS(2408052-BS1)							
Analyte	% Recovery	LOQ	Units	%Recovery Limits	Extracted	Analyzed	Notes
Cadmium	103	0.08	ug/g	80-115	02/22/24 09:38	02/22/24 17:27	
Lead	102	0.08	ug/g	80-115	02/22/24 09:38	02/22/24 17:27	
Arsenic	99.3	0.08	ug/g	80-115	02/22/24 09:38	02/22/24 17:27	
Mercury	106	0.04	ug/g	80-115	02/22/24 09:38	02/22/24 17:27	

Batch: 2408065 - 203

Blank(2408065-BLK1)							
Analyte	Result	LOQ	Units	%Recovery Limits	Extracted	Analyzed	Notes
aflatoxin B1	< LOQ	10.0	ug/kg		02/22/24 11:36	02/23/24 18:53	
aflatoxin B2	< LOQ	10.0	ug/kg		02/22/24 11:36	02/23/24 18:53	
aflatoxin G1	< LOQ	10.0	ug/kg		02/22/24 11:36	02/23/24 18:53	
aflatoxin G2	< LOQ	10.0	ug/kg		02/22/24 11:36	02/23/24 18:53	
ochratoxin A	< LOQ	10.0	ug/kg		02/22/24 11:36	02/23/24 18:53	

LCS(2408065-BS1)							
Analyte	% Recovery	LOQ	Units	%Recovery Limits	Extracted	Analyzed	Notes
aflatoxin B1	82.7	10.0	ug/kg	60-120	02/22/24 11:36	02/23/24 19:04	
aflatoxin B2	84.5	10.0	ug/kg	60-120	02/22/24 11:36	02/23/24 19:04	
aflatoxin G1	81.6	10.0	ug/kg	60-120	02/22/24 11:36	02/23/24 19:04	
aflatoxin G2	77.8	10.0	ug/kg	60-120	02/22/24 11:36	02/23/24 19:04	
ochratoxin A	63.9	10.0	ug/kg	60-120	02/22/24 11:36	02/23/24 19:04	



Nolan Mundie
Lab Director - 2/29/2024

These results relate only to the sample included on this report. The report may not be reproduced except in full, without the written permission of Green Leaf Lab.



Notes and Definitions

Regulatory Compliance samples were collected onsite at facility according to SOP-402 and SOP-403 and following Sampling Plan FN117. Quality Control samples were tested as received. Results do not include uncertainty of measurements. Available upon request.

- ATM Non-cannabis matrix related interference or suppression of Internal standard
 - BLI Baseline Interference - Cannabinoid peak interference in chromatographic baseline affecting QC recovery .
 - BLK Analyte detected in method blank, but not associated samples.
 - BSH Blank Spike High - Blank Spike recovery above method limit. no detections in samples.
 - BSL Blank Spike Low - Blank Spike recovery below lower method limit, analyte chromatography reviewed manually for all samples.
 - CBD Interference due to co-elution
 - CV1 CBD matrix interference on GC Pest chromatography
 - CV2 CCV was above acceptance criteria, Non-detect samples are considered acceptable.
 - INF CCV was below acceptance criteria, sample still exceeds regulatory limit.
 - ISH One or more QC falls outside acceptance criteria. Data entered into LIMS for informational purposes only.
 - ISL Internal Standard concentration is above acceptance criteria.
 - MSH Internal Standard concentration is below acceptance criteria.
 - MSI Matrix Spike High - Matrix Spike recovery above method limits.
 - MSL Matrix Spike Interference - Matrix spike source sample contains analyte hit above calibration affecting recovery accuracy in Matrix Spike.
 - TPP
 - U Matrix Spike Low - Matrix Spike recovery below lower method limit, analyte chromatography reviewed manually for all samples.
- Internal Standard concentration outside control limit due to matrix interference



Nolan Mundie
Lab Director - 2/29/2024

These results relate only to the sample included on this report. The report may not be reproduced except in full, without the written permission of Green Leaf Lab.